



Kenwood Music Keg
Instruction Manual

KENWOOD
music  **keg**



Table of Contents

GETTING STARTED	4
<i>FOUR STEPS TO A QUICK START.....</i>	5
<i>SYSTEM COMPONENTS.....</i>	6
A. <i>Kenwood Music Keg Overview</i>	8
B. <i>DMS Cartridge Overview</i>	8
<i>Safety and Handling Precautions</i>	11
SECTION I: INSTALLATION GUIDE	12
<i>Before mounting the Kenwood Music Keg</i>	12
<i>Mounting Location.....</i>	12
<i>Connecting the Music Keg to your Kenwood stereo.....</i>	13
<i>Wiring a Music Keg to Kenwood stereos.....</i>	14
SECTION II: SETTING UP AT HOME	17
<i>Installing the Kenwood edition of the PhatNoise Music Manager software</i>	17
SECTION III: CREATING AND MANAGING PLAYLISTS	23
<i>MP3 Files and ID3 Tags.....</i>	23
<i>Static vs. Dynamic Playlists</i>	23
<i>Launching the Music Manager</i>	24
<i>Navigating the Program</i>	24
<i>Creating and Managing Playlists</i>	27
<i>The Kenwood Music Keg can handle as many as 10,000 separate playlists. The total number of songs on the DMS Cartridge must not exceed 40,000. Transferring MP3s and playlists to the DMS cartridge</i>	31
<i>Transferring MP3s and playlists to the DMS cartridge</i>	32
<i>Adding a playlist to an existing disc on the DMS cartridge</i>	33
<i>Adding a Music Manager playlist as a new disc on the DMS cartridge</i>	34
<i>Adding individual songs to a disc on the DMS cartridge.....</i>	34
<i>Additional DMS Features</i>	34
<i>Creating a Blank Disc</i>	34
<i>Syncing Music</i>	35
<i>Example Playlists.....</i>	36
SECTION IV: OPERATING THE KENWOOD MUSIC KEG WITH YOUR KENWOOD STEREO	38
<i>Setting the audio mode.....</i>	38
<i>Navigating the songs in a playlist</i>	38
<i>Navigating the playlists in the Music Keg</i>	38
<i>Displaying information about your music</i>	39
<i>Special Notes</i>	39
APPENDIX A: UPDATING THE FIRMWARE IN YOUR KENWOOD MUSIC KEG	40
APPENDIX B: SWITCHING BETWEEN 1 AND 2 DIGIT KENWOOD STEREO	46
<i>Changing the Music Keg between 1 and 2 digit modes.....</i>	47
APPENDIX C: TROUBLESHOOTING.....	50
APPENDIX D: WARRANTY AND LIABILITY POLICY	52
<i>Important Safety and Handling Instructions.....</i>	52
<i>FCC WARNING.....</i>	52
<i>Installation Precautions.....</i>	52
<i>Digital Media Storage Cartridge Precautions</i>	53
<i>Music Keg Player and USB Cradle Precautions</i>	53
APPENDIX E: USING AUDIBLE CONTENT WITH YOUR KENWOOD MUSIC KEG	53
APPENDIX E: CONTACTING KENWOOD SUPPORT	62

Copyright 2002, Kenwood USA, Corporation and PhatNoise, Inc. – All Rights Reserved. All trademarks, service marks and tradenames, including without limitation, KENWOOD, EXCELON, MUSIC KEG, are proprietary to Kenwood Corporation. All trademarks, service marks and tradenames, including without limitation and PHATNOISE, PHATNOISE MUSIC MANAGER, DPGT and DMS are proprietary to PhatNoise, Inc.

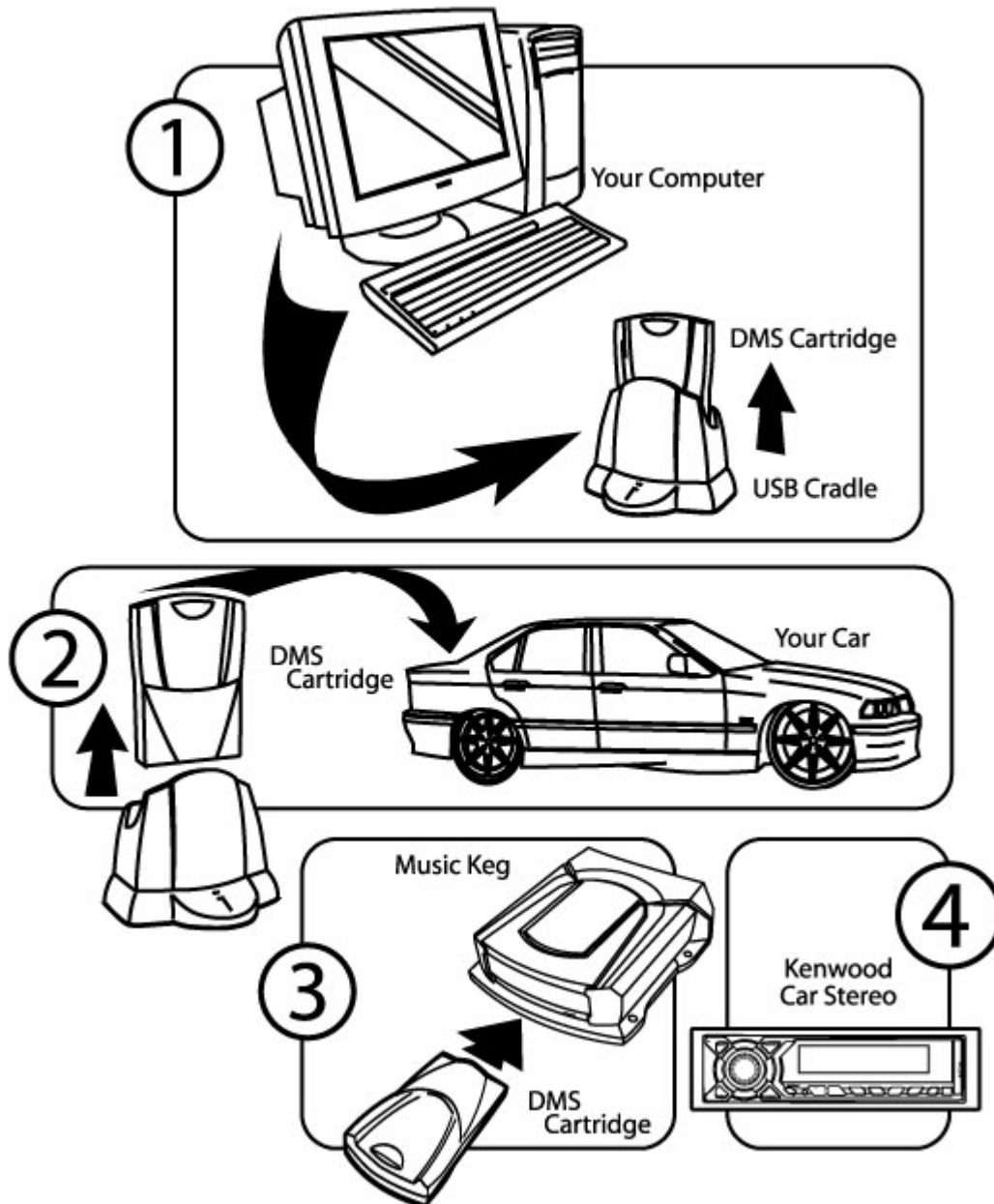


Gracenote is CDDb, Inc. d/b/a "Gracenote." CD and music-related data from Gracenote CDDb® Music Recognition ServiceSM © 2000, 2001, 2002 Gracenote. Gracenote CDDb Client Software © 2000, 2001, 2002 Gracenote. U.S. Patents Numbers #5,987,525; #6,061, 680; #6,154,773, and other patents issued or pending.

CDDb is a registered trademark of Gracenote. The logo and logotype, the Gracenote CDDb CDDb logo and logotype, and the "Powered by Gracenote CDDb" logo are registered trademarks of Gracenote. Music Recognition Service and MRS are service marks of Gracenote.

Getting Started

The Kenwood Music Keg is the most advanced automotive digital music jukebox available today. By offering one-touch access to an unlimited number of MP3s, WMA's and other music files, it provides music lovers the ultimate in power and flexibility with seamless integration to Kenwood stereos.



Four steps to a quick start

This manual contains step-by-step instructions for the operation of your Kenwood Music Keg, but as a quick overview we start with the four major steps:

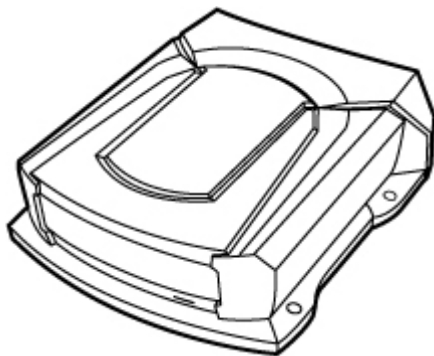
- Step 1) **Install the Kenwood Music Keg in your car.** *For more information on how to install the Music Keg in your car, see section I.*
- Step 2) **Install the PhatNoise Music Manager software on your PC.** *For more information on how to set your PC, see section II.*
- Step 3) **Create playlists of your favorite music.** *For more information on creating and managing playlists, see section III.*
- Step 4) **Play your music through your Kenwood car stereo** by switching to the CD changer mode. *For more information on operating your Kenwood stereo, see section IV in this manual.*

System Components

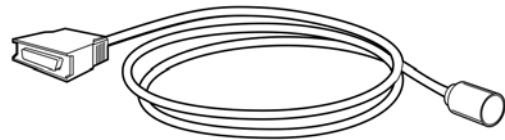
Please check to make sure your Kenwood Music Keg package is complete. In addition to this manual, you should have received all of the following parts:

- 1 Kenwood Music Keg
- 1 Kenwood Music Keg connector cable (6 meter)
- 1 DMS cartridge
- 1 USB cradle with attached USB cable
- 1 USB cradle power adaptor
- 1 PhatNoise Music Manager software CD-ROM

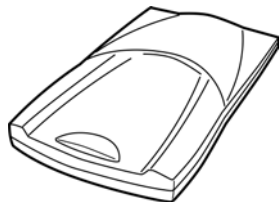
Kenwood Music Keg



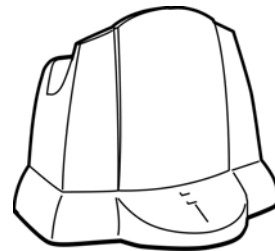
Kenwood Music Keg connector cable



DMS Cartridge



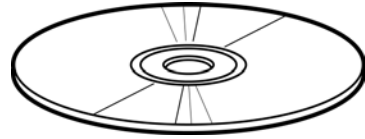
USB Cradle



USB Cradle power adaptor

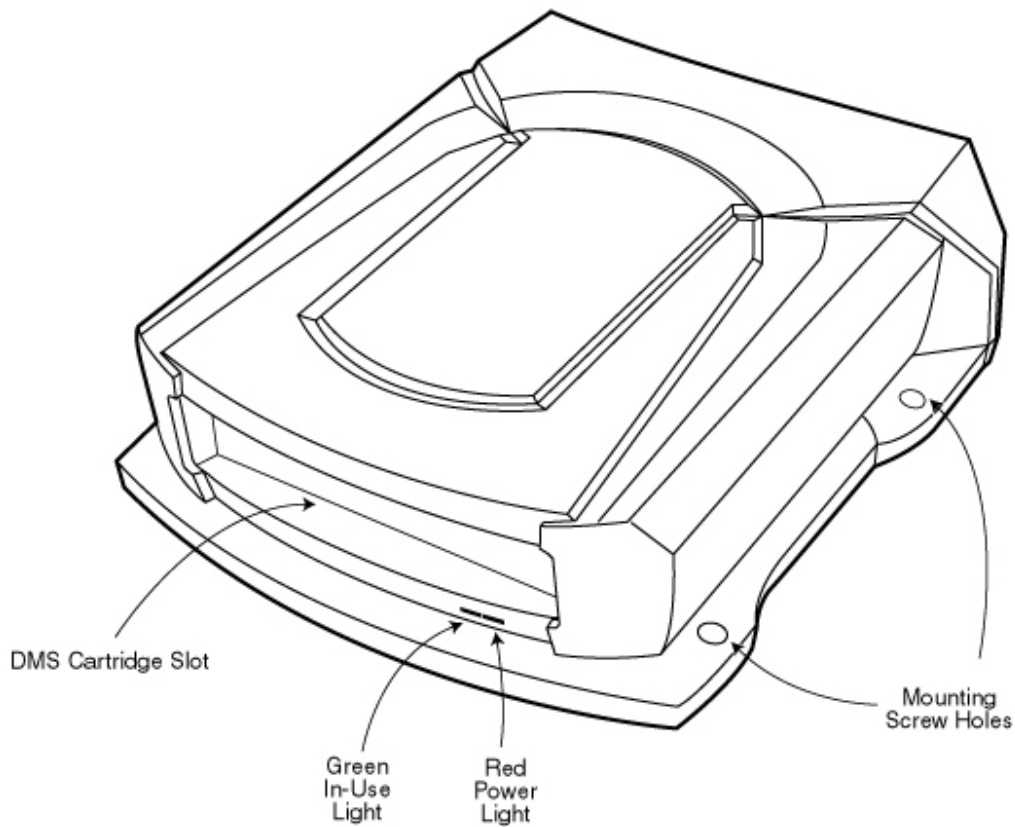
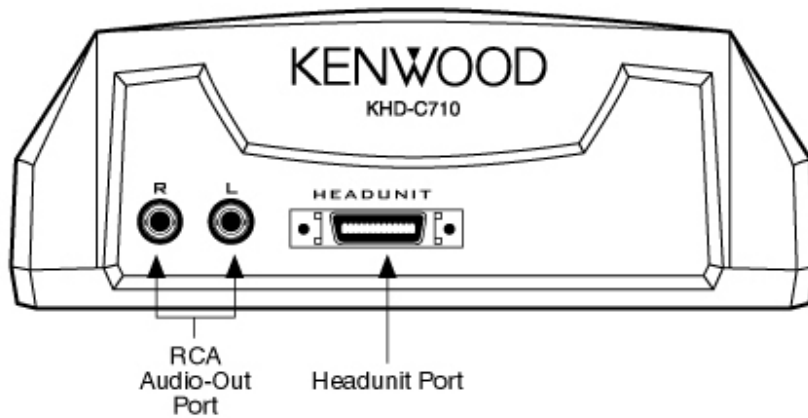


PhatNoise Music Manager
software CD-ROM



A. Kenwood Music Keg Overview

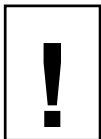
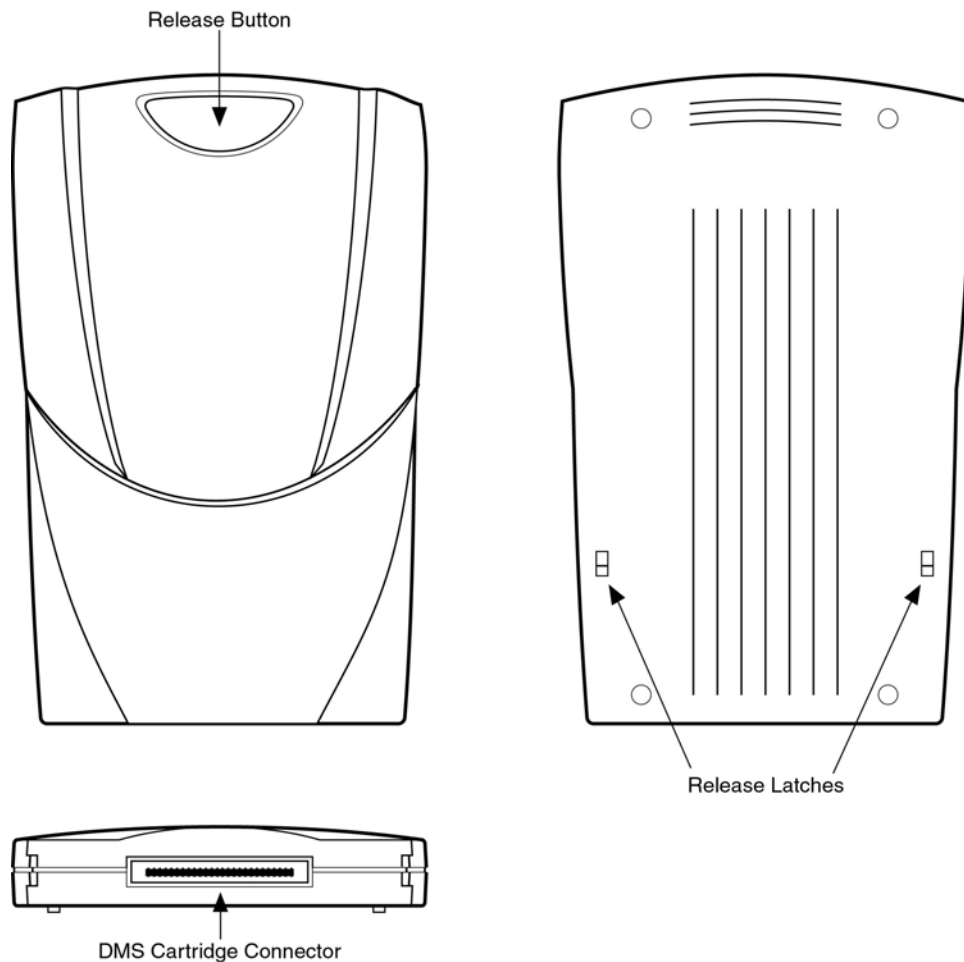
The Music Keg is the central brain of the Kenwood Music Keg car audio system. It is a computer that you install permanently in your vehicle. The Music Manager software and the music files themselves are contained on a DMS cartridge that is inserted into the Music Keg.



B. DMS Cartridge Overview

The DMS cartridge is what makes the Kenwood Music Keg flexible. Like a computer hard drive, its huge storage capacity can accommodate thousands of music files.

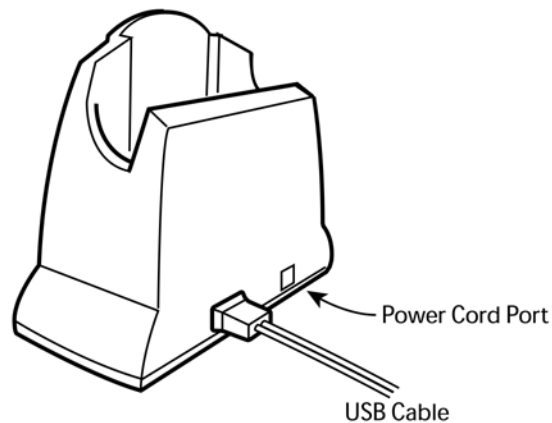
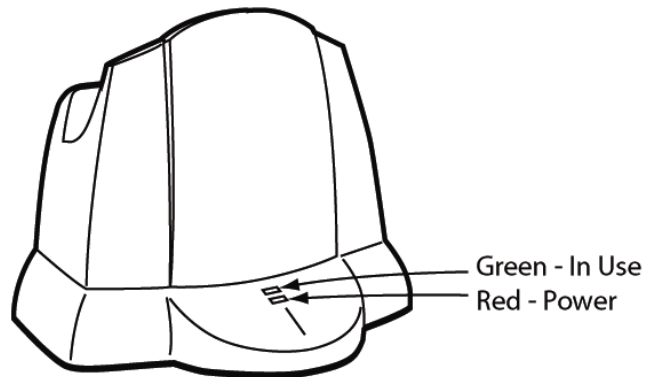
When inserting the cartridge into the Music Keg, make sure it slides all the way in until the latches click. Press the release button whenever pulling the cartridge out of the cradle or the Music Keg.



Do not open the DMS cartridge casing. Doing so will void your warranty. Only use the cartridge supplied with your Kenwood Music Keg—other cartridges with other drives inside will not work with your system.

C. USB Cradle Overview

The USB cradle plugs into the USB port in the back of your computer. Inserting the DMS cartridge into the USB cradle allows your computer to download and store music files in your DMS cartridge just like a hard drive.



Please be careful when the DMS cartridge is in the USB cradle. If you bump or drop the USB cradle and DMS cartridge while in use, you may damage the units.



*Important! Download and install the PhatNoise Music Manager software in your computer **before** you connect the USB cradle to your computer.*

Safety and Handling Precautions

Do not install the Kenwood Music Keg on the rear deck of a car where it will be subjected to direct sunlight and high temperatures.



Do not install the Music Keg where it will be subjected to hot air from the heater or any other high-temperature location.



Also do not install the Music Keg where you cannot firmly secure the unit, or in high-vibration areas.

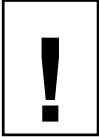


Do not install the Music Keg in an area of high humidity or where large amounts of airborne dust/dirt are present.



Section I: Installation Guide

For your convenience, the Kenwood Music Keg has already been configured for your Kenwood stereo. For the Music Keg to recognize this configuration, **you must insert the DMS cartridge into the Music Keg, prior to installation.**



Important note: If you have no experience installing car audio equipment, we recommend you go to a professional installer for the mounting and wiring of the Kenwood Music Keg.

Before mounting the Kenwood Music Keg

Please keep the following considerations in mind when mounting your Music Keg:

Mounting Location

The Music Keg can be mounted anywhere in the car. The three most common locations are the trunk, under the passenger seat or in the glove box.

If you already have a CD changer installed in the trunk, we recommend that you install the Music Keg close to the existing CD changer. This will make wiring the Music Keg much easier.

Mounting Orientation

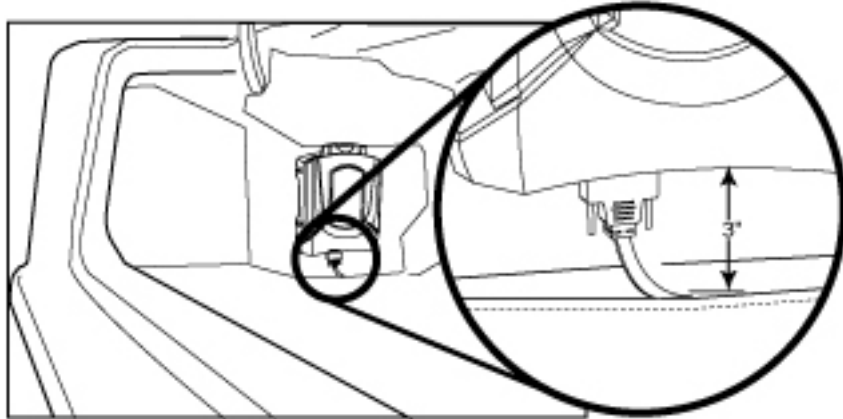
The Music Keg should be mounted in the vertical, horizontal or upside down positions. For best shock resistance, avoid mounting the Music Keg on an angled surface.

Also, please note what is behind or under the mounting location. Avoid mounting the Music Keg where screws could hit wiring or fuel lines.

Mounting Clearance

You must leave the front of the Kenwood Music Keg unobstructed to allow the DMS cartridge to be removed from the DMS cartridge slot.

The Music Keg cable needs at least 3 inches of clearance to keep the cables from straining or bending unnecessarily. Please keep this in mind when choosing a mounting location.

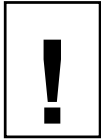


Connecting the Kenwood Music Keg to your car stereo

As far as your Kenwood stereo is concerned, the Music Keg appears just like any ordinary CD changer. For this reason, the Music Keg is connected to a Kenwood stereo the same way a CD changer is connected.

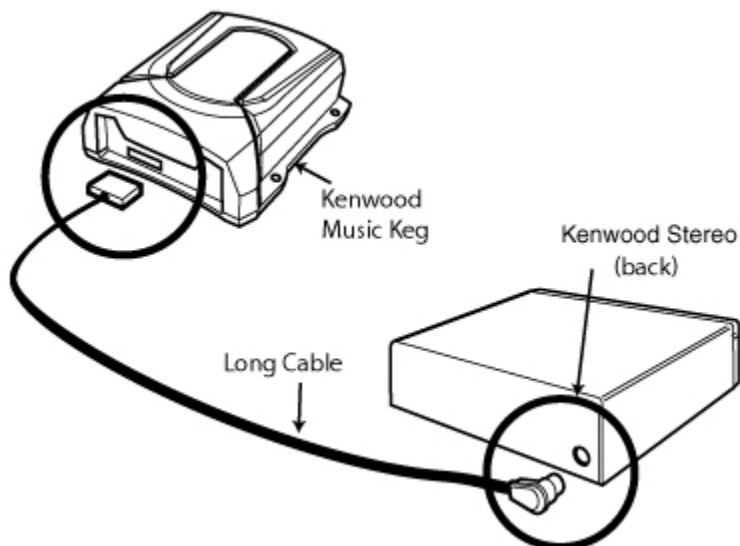
Wiring a Kenwood Music Keg to Kenwood car stereos

1. Turn off the car and the stereo.
2. Gain access to the rear portion of your car stereo Kenwood stereo.

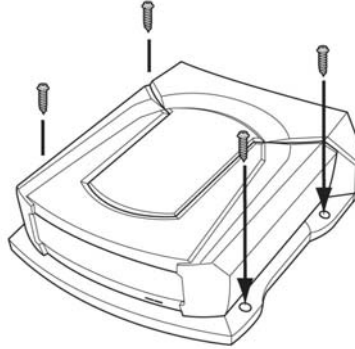


Important note: Depending on your car, the following step may involve removing parts of the dashboard. If you do not have experience installing car audio equipment, we recommend you seek the assistance of a professional car audio installer.

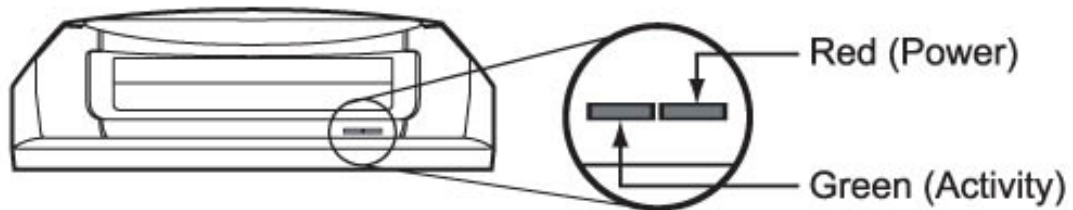
3. Using the long (6.0 meter) Music Keg connector cable, plug the appropriate end into the changer control terminal on the rear of the Kenwood car stereo.



- Secure the Music Keg to the mounting location with the four included self-tapping screws. Make sure the Music Keg is mounted such that the connector cable will reach with ample room. The Music Keg should be mounted to a flat, hard and stable surface, such as particle board or sheet metal.



- With the DMS cartridge fully inserted, plug the cable into the back of the Music Keg.
- You should see the red and green lights turn on.



- About 5 seconds later, both lights should turn off and stay off.
- Turn on your Kenwood car stereo.
- Switch to CD changer mode on your Kenwood car stereo.
- Wait for a "Welcome to the Kenwood Music Keg " message to play. You may have to wait up to 15 seconds for the Music Keg to boot. Listen to the entire message to learn how to use the Music Keg.
- Congratulations! The Music Keg is installed and ready to be used. Turn off the stereo and remove the DMS cartridge. The next section will guide you through installing the desktop software.



Is something wrong?

No lights come on at all:

1. Disconnect the cable from the Kenwood Music Keg. Wait 20 seconds and reconnect.
2. Your cartridge may be corrupted. Please see *Appendix E: Contacting Kenwood* to get assistance.

The red light turns on, but the green light does not:

1. Disconnect the cable from the Music Keg, wait about 1 minute, then re-connect it, or
2. Your cartridge may be corrupted. Please see *Appendix E: Contacting Kenwood* to get assistance.

Section II: Setting up at Home

Installing the Kenwood edition of the PhatNoise Music Manager software

The Kenwood edition of the PhatNoise Music Manager software is included on the CD found in your package. You can use the software to create and manage playlists of MP3s, WMA, FLAC and WAV files.



You ***must*** install the Music Manager software on your computer ***before*** you connect the USB cradle to your computer.

Windows 98 Second Edition and above (Windows Millenium, Windows 2000, Windows XP) is required to use the Music Manager software.

To configure the software, it is very important to follow these steps in order.

1. Exit all running Windows programs.
2. Insert the Music Manager software CD into your PC's CD-ROM drive. Wait a few moments. The Music Manager software installation program will launch automatically.
3. If the Music Manager software installation program does not run, follow these steps to run the software manually:
 - a. Click the "Start" button in the lower left corner of your screen and select "Run...". The Run dialog box appears.
 - b. Type the following text in the drop-down list box:

d:\PMM_setup.exe

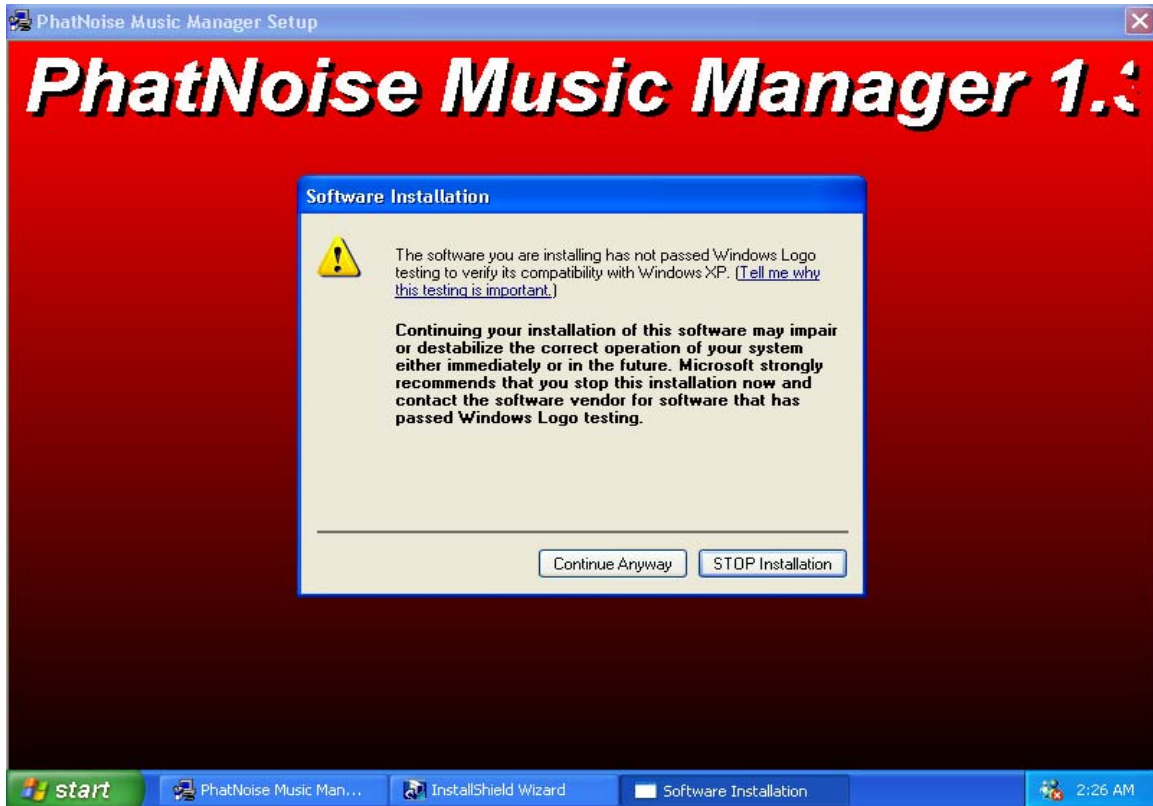
where "d:" is the letter corresponding to your CD-ROM drive.
 - c. Click OK.
4. Follow the instructions to install the Music Manager software.



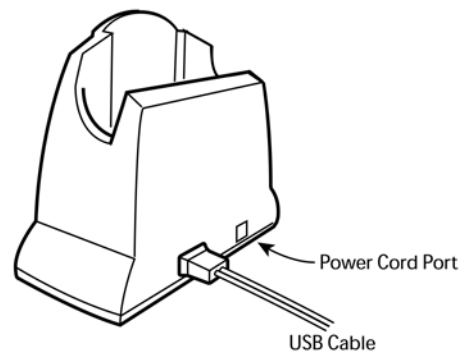
NOTE: Windows XP ONLY!

During the installation, Windows XP will most likely pop up warning message boxes titled "Software Installation". These are normal.

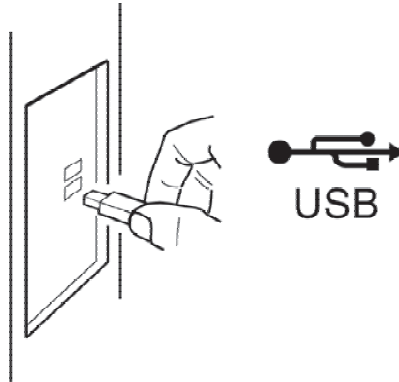
Click "Continue Anyway".



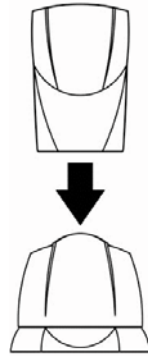
5. When the installation is finished, the setup program will ask you to reboot the computer.
6. If the DMS cartridge is inserted into the USB cradle, remove it now.
7. Once your computer has rebooted, plug the power connector into the USB cradle.



8. Connect the USB cradle to a USB port on your PC. Make sure the cradle is plugged into a power supply before connecting it to your computer.

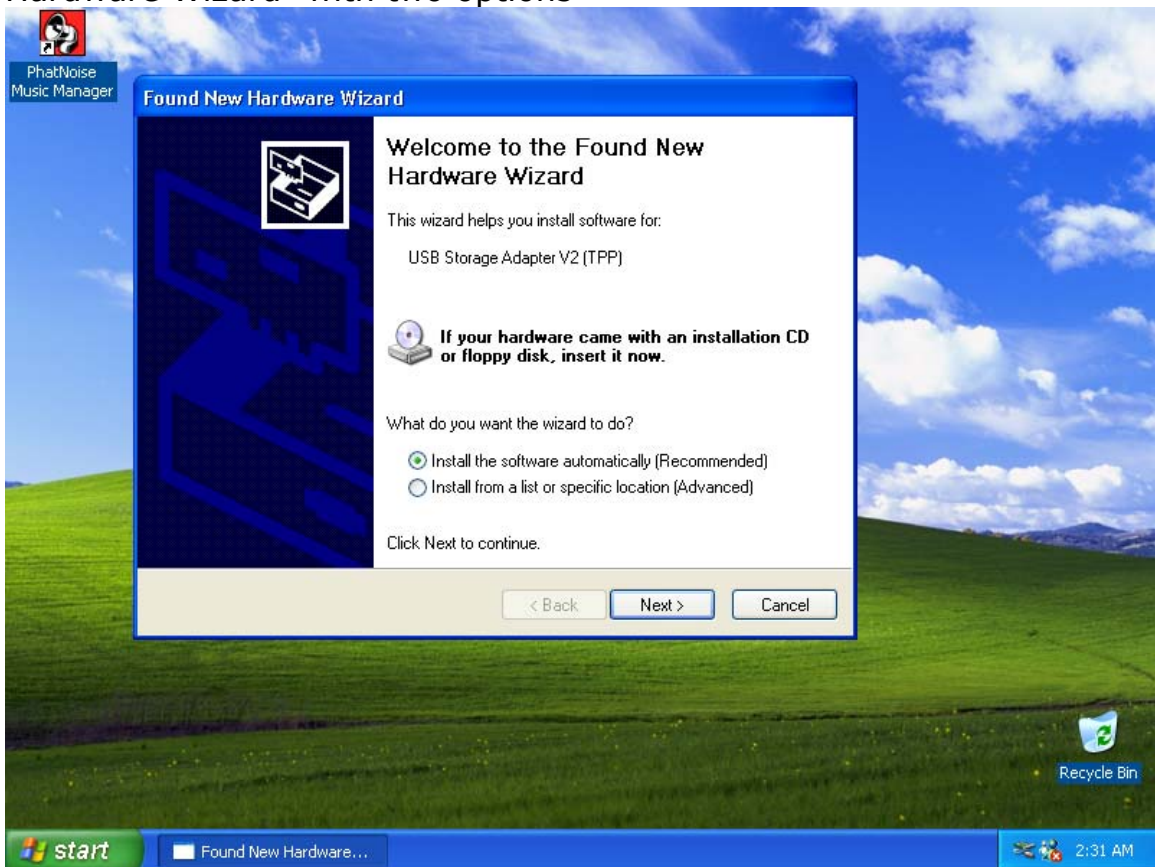


9. Insert the DMS cartridge firmly into the USB cradle. Avoid 'slapping' the cartridge into place. The green and red indicator lights should illuminate. The DMS cartridge will then be detected by the operating system.



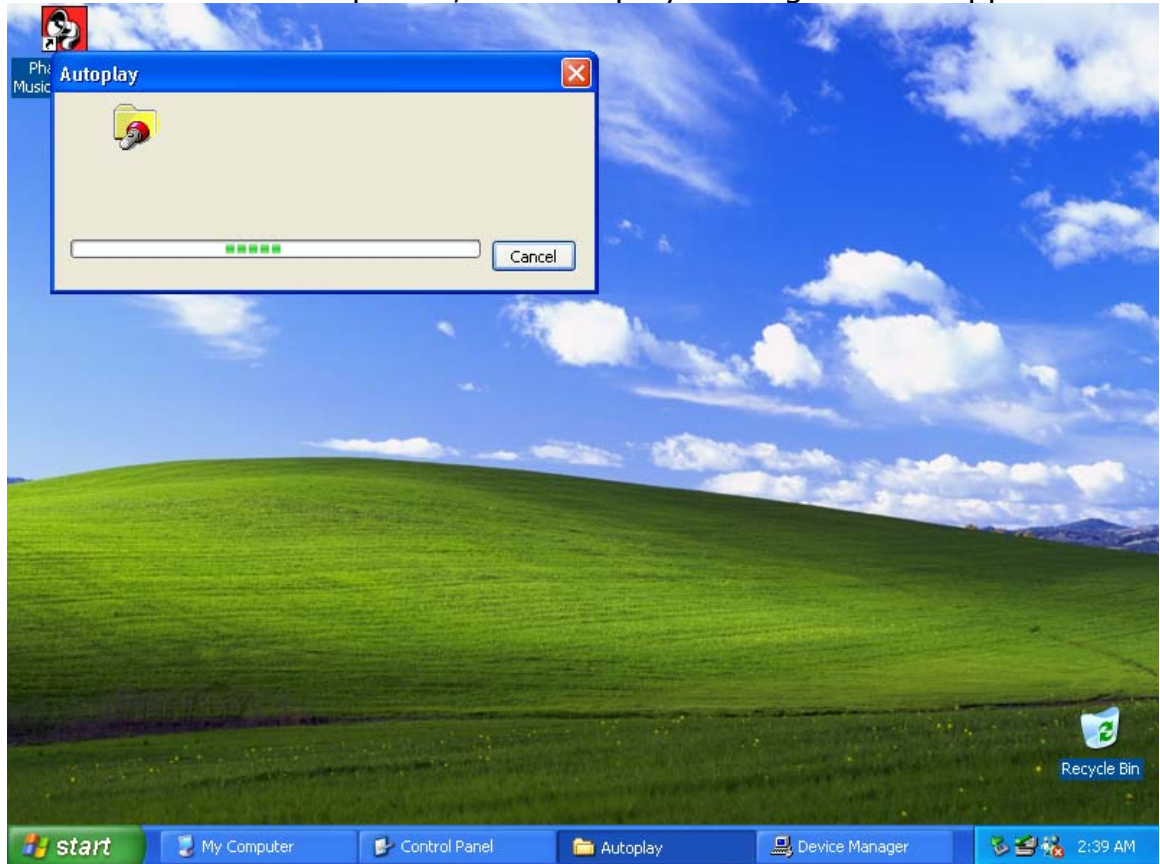
NOTE: Windows XP ONLY!

1. After detecting the DMS, Windows will launch the "Found New Hardware Wizard" with two options



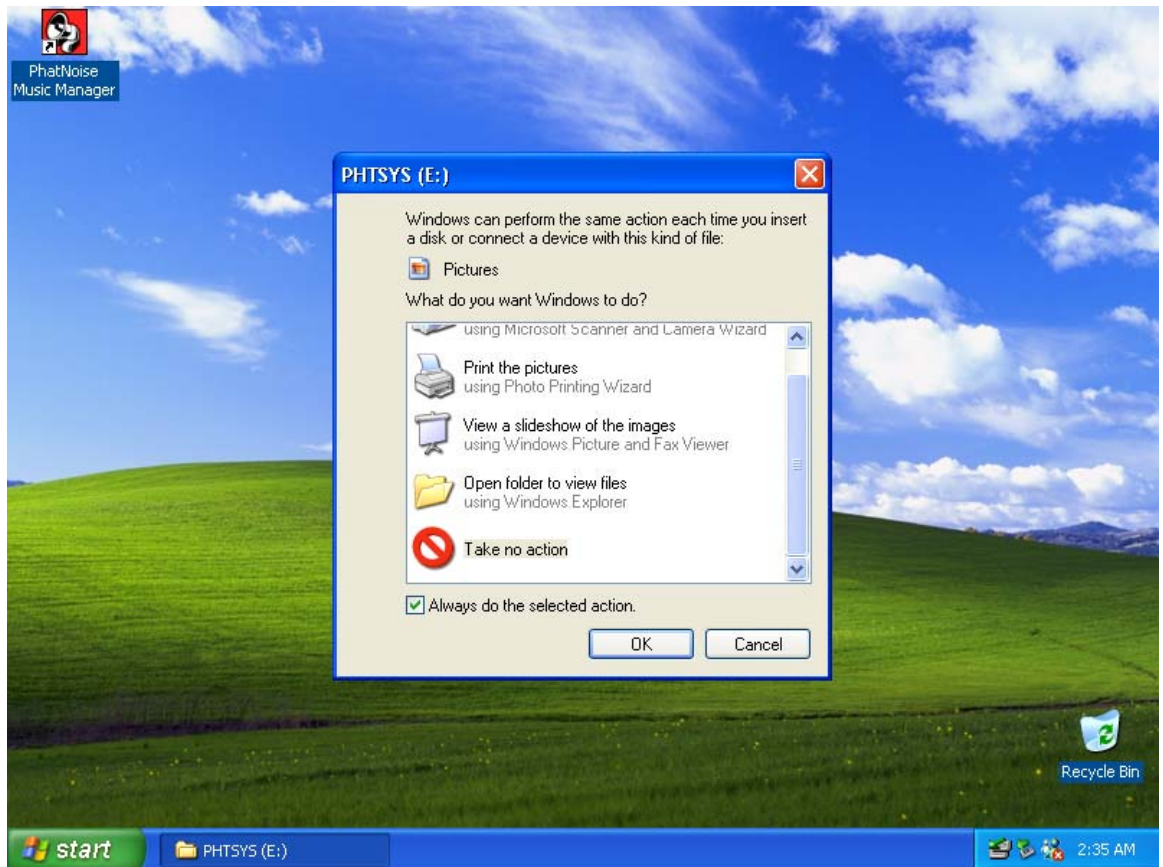
- a. "Install the software automatically (Recommended)"
 - b. "Install from a list or specific location (Advanced)"
3. Choose "Install the software automatically (Recommended)"
 4. Click "Next"
 5. A "Hardware Installation" warning box will appear
 6. Click "Continue Anyway"
 7. Click "Finish"

8. After an initialization period, an "Autoplay" dialog box will appear



9. Let the Autoplay feature complete

10. Dialogs will appear for PHTDTA and PHTSYS



11. For each dialog, select "Take No Action" and check "Always do the selected Action" Click "OK"
12. Your DMS cartridge is ready!

Section III: Creating and Managing Playlists



This section of the instruction manual serves to introduce the core features of the PhatNoise Music Manager software. To explore all the features of the software, press F1 while the Music Manager is running.

MP3 Files and ID3 Tags

The Music Manager software allows you to organize, play, and create digital music files. These music files come in many different formats, but the most popular is the MP3 format.

MP3s are to your computer as Audio CDs are to your home/car stereo. Put simply, an MP3 is a compressed audio file that can be listened to on the computer. An MP3 file is made of two parts, the audio data and the ID3 tag. The ID3 tag is very important because it enables the Music Manager software to organize music files for easy referencing.

The system is analogous to a library book and its jacket. A book jacket contains the author's name, the book title, and a short summary. An ID3 tag contains information about the Artist, Song Title, Album Title, Genre, Year, and a Comment. MP3 files possessing an incorrect ID3 tag will be improperly filed (much like a book with the wrong book jacket would be misplaced in a library).

Static vs. Dynamic Playlists

Once you have added a few music files to the computer, you can begin to create playlists. The Music Manager software has the technology to create a **dynamic** playlist. A **dynamic** playlist is a playlist that is defined by criteria. A **static** playlist is defined by a list of files. The difference is that when you create or download a new MP3, a **dynamic** playlist will be automatically updated if the new file matches the playlist criteria. A **static** playlist will not be updated automatically because there is no criterion that defines whether or not an MP3 belongs in the playlist.

Let's return to the ID3 tag/book jacket analogy above. A **static** playlist is equivalent to a bookshelf of books: the books may be related or have similarities, but when a new book is obtained, the bookshelf does not know if this new book belongs on the bookshelf. A **dynamic** playlist is equivalent to a bookshelf with a librarian. The librarian understands which books and types of books belong to each bookshelf; thus when a new book is added the librarian will place the

books in the appropriate bookshelf. The Music Manager software is like a librarian for music.

Now it's time to start using the Music Manager. The following sections will walk you step by step through the core features including:

1. Creating MP3 files from an Audio CD
2. Organizing music files into both static and dynamic playlists
3. Transferring MP3s and playlists to the DMS cartridge

Launching the PhatNoise Music Manager

1. Launch the Music Manager software. You can do this one of two ways:
 - o Double-click the Music Manager icon on your desktop.
 - o Click "Start", select "Program Files", and select the Music Manager icon.
2. You will see the Music Manager splash screen, then the "Load Songs" screen will appear.
3. Choose a location on your computer that contains songs you wish to load into the Music Manager database. This may be a music folder you already have (i.e. "C:\My Music"), or a program folder that you use to download music (i.e. "C:\Program Files\my downloads\My Shared Folder").

Navigating the Program

Each icon on the left of the application's screen represents a different interface and part of the software.



Library View



CD Encoder View



Update Device View



Web Browser View

Converting an Audio CD to MP3, WMA, WAV, FLAC or OGG Files

The CD Encoder Interface allows you to add songs from your CDs to the hard drive.

To add music from CDs to the Music Manager follow these steps:

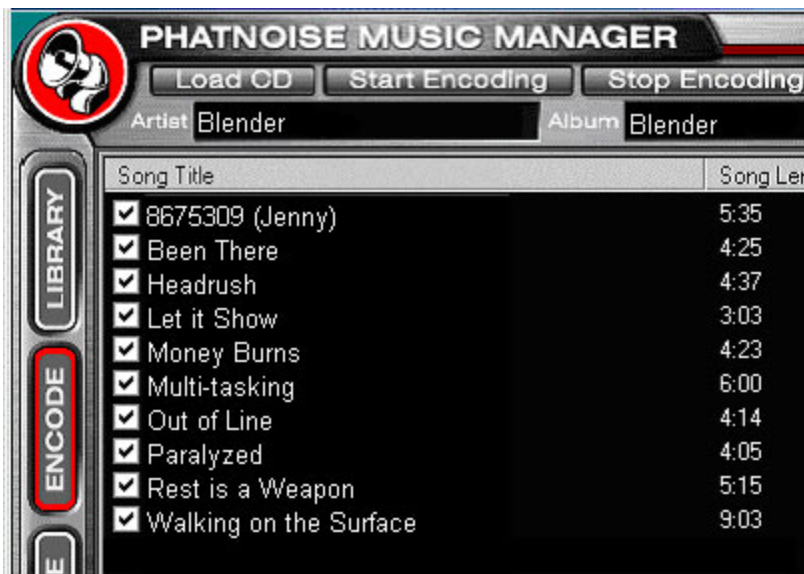
1. Switch to the CD Encoder view by pressing this button



2. Insert the CD into the computer. Press the **Load** Button.



3. If the computer is connected to the Internet, the songs names will appear next to the track numbers as follows:



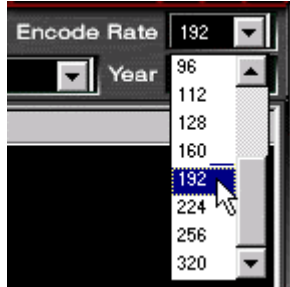
4. If the computer is not connected to the Internet, the tracks will be listed "Track 01", "Track 02", etc.



5. Edit the "Artist", "Title", "Genre" and "Year" information if it is missing or incorrect.
6. Choose the tracks your want to encode using the checkboxes.
7. Choose the file format you want to encode in.



8. Choose the bitrate of the file to be created.



For MP3 files we recommend a bitrate of 192kbps for the best combination of sound quality and small file size. For WMA files we recommend encoding at 128kbps as the best combination of sound quality and file size.

9. Press the **Start** button on the Encode panel and the process will begin.



Creating and Managing Playlists

To create and manage your music playlists, click on the **Library** button.



The Playlist view appears.



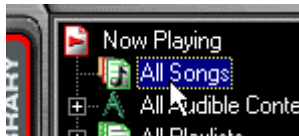
1. Creating a new playlist

1. Click the **Create** playlist button. Then change the name of the playlist to a name of your choice.



2. Adding songs to a static playlist

1. Click on the **All Songs** playlist.



2. Type a search query in the **Search** box.



Highlight the desired songs



Drag the desired songs into your playlist



- Another way of browsing and finding songs is via the **Browse View**. To access the Browse View, click the Browse View button in the top-right corner.



Songs will be arranged by album, artist and genre in the Browse View.

3. Adding songs to a dynamic playlist

1. Click on the desired playlist to edit.
2. Click the **Edit** playlist button.



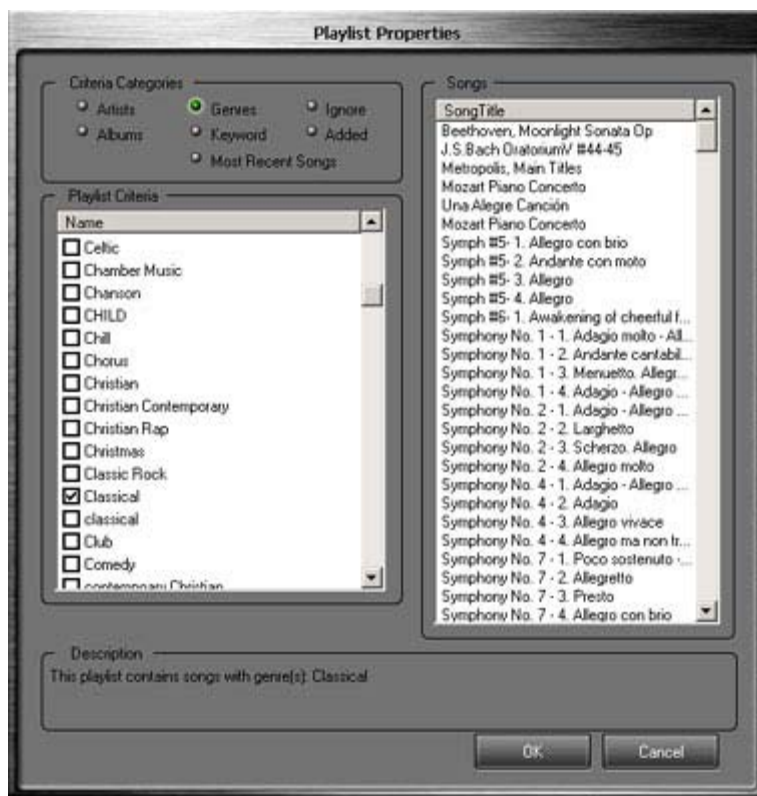
3. Edit the playlist criteria via the playlist properties dialog box.
4. To add criteria to a playlist, select the criteria to add.

The criteria selected will determine what is displayed in the criteria window. For example, if **Artist**, **Genre** or **Album** is selected, then a list of all Artists, Genres or Albums is displayed.

If **Keywords** is selected, an input box appears at the bottom of the criteria window. Simply enter the keyword and press **Add**.

If **Most Recent Songs** is selected, then an input box will appear at the bottom of the criteria window. Enter the number of most recent songs to add and press **Add**.

Each time you select a playlist in the Music Manager software, the list of criteria in that playlist is checked against the music collection on your PC's hard drive. All songs that match the criteria are automatically added to your dynamic playlist.



The Kenwood Music Keg can handle as many as 10,000 separate playlists. The total number of songs on the DMS cartridge must not exceed 40,000.

Transferring MP3s and playlists to the DMS cartridge

1. Insert the DMS cartridge into the USB cradle. The LED lights on the cradle will flicker when the cartridge has been properly inserted.
2. Begin by accessing the Devices view by clicking the **Device Manager** button.



3. The Devices view appears:



The Devices view is organized in two parts:

- The Music Manager **Playlist** and Windows **Explorer** panels
- The **All Supported Devices** panels.

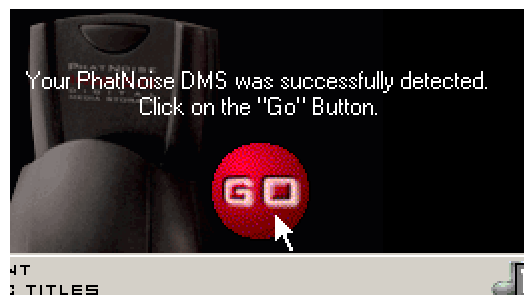
4. Activate the Kenwood Music Keg DMS cartridge by clicking **PhatNoise DMS** in the **All Supported Devices** panel.



If the DMS cartridge is connected properly, a summary screen appears with a red **"GO"** button.

If the DMS cartridge has not been configured properly, a configuration wizard will launch. For more information, refer to *Appendix A: Updating the Firmware in your Music Keg* .

5. Click the red **"GO"** button.



Adding a playlist to an existing disc on the DMS cartridge

(Note: Playlists are called 'Discs' when they are on the DMS cartridge)

1. Drag the playlist onto an existing disc. The target disc will take on the name of the playlist.



Adding a Music Manager playlist as a new disc on the DMS cartridge

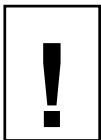
1. Drag the playlist into the DMS area.
2. A new disc will automatically be created.

Adding individual songs to a disc on the DMS cartridge

1. Drag the songs onto the appropriate disc.

Note: When dragging an individual file onto a DMS disc that contains a dynamic playlist, the DMS disc will automatically be converted into a static playlist.

2. When you are finished modifying the contents of the DMS disc, click **Save/Eject DMS**.



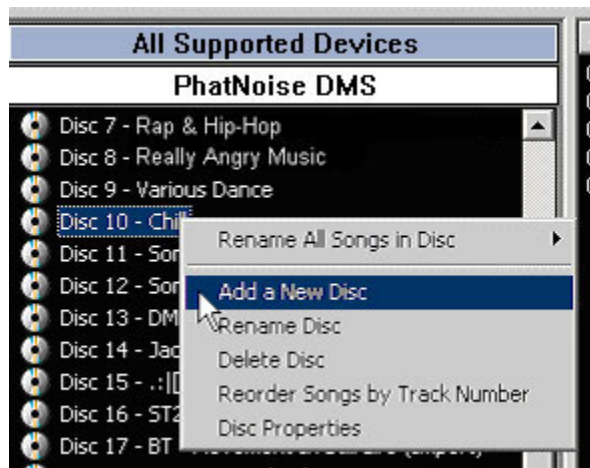
Wait until the software displays a message indicating it is safe to remove the cartridge. Removing the cartridge before this message appears will corrupt the hard drive.

Additional DMS Features

Creating a Blank Disc

1. You can create a blank disc as a 'placeholder' for future playlists.

Right-click the area under **DMS** in the Device view and choose **Add a New Disc**.



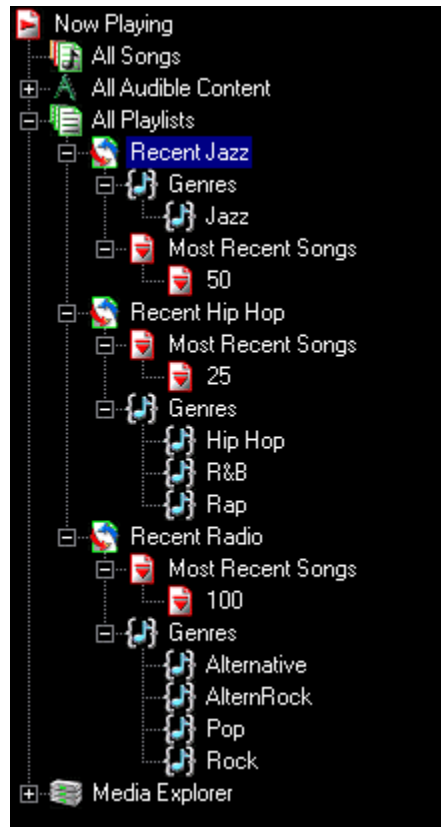
Syncing Music

In the **Device** view, a **yellow star** next to the Disc icon denotes a **dynamic playlist**. By pressing the **Sync Music Keg** button, any updates to those discs will automatically be copied to the DMS cartridge. If a disc has fresh content after syncing, the yellow star will turn blue and the new files will be highlighted. Be sure to click **Save/Eject DMS** to apply the changes.

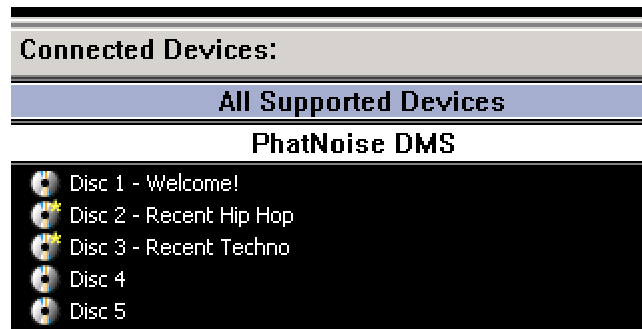
Example Playlists

There are many ways of organizing songs and playlists for use in your car, and after a few tries you will find a system that works for you. The following example is one you may want to try.

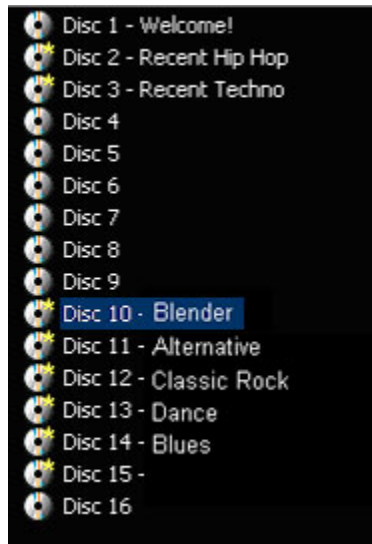
In the illustration below, several playlists have been made that contain the most recent 25 or 50 songs for different styles of music.



Next, a 'Recent Hip-Hop' Disc is made in the car by simply dragging the playlist from the top window to a blank location under 'Music Keg DMS'.



Here, the 'Recent Hip Hop' and 'Recent Techno' discs were created by this method. These were dragged right below the first disc, the "Welcome!" disc. Note the yellow stars for these two 'Recent' playlists – that means these are **dynamic** playlists.



One way to make navigation easier in the car is to reserve Discs 10 and higher for dynamic playlists of individual artists or genres. The following is a shortcut for making them:

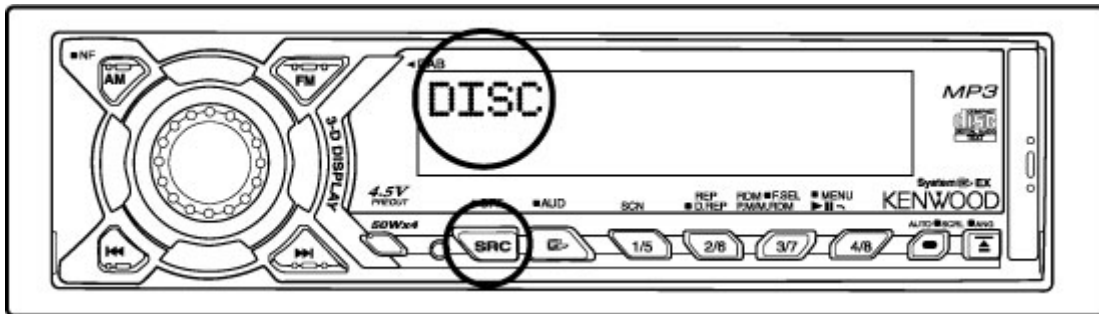
1. Select the 'All Songs' playlist in the device view.
2. Click the "Browse View" button.
3. Select an artist and drag it to the desired location on the DMS cartridge. You can create a new disc for it just by dragging the artist to a blank space. Note these playlists are Dynamic as well.

Section IV: Operating the Kenwood Music Keg With Your Kenwood Stereo

The Kenwood Music Keg is controlled through the CD changer controls of your existing Kenwood stereo. To the car stereo, the Music Keg appears like a large CD Changer. Playback of MP3 files is controlled via the next/previous track and next/previous disc buttons on the car stereo.

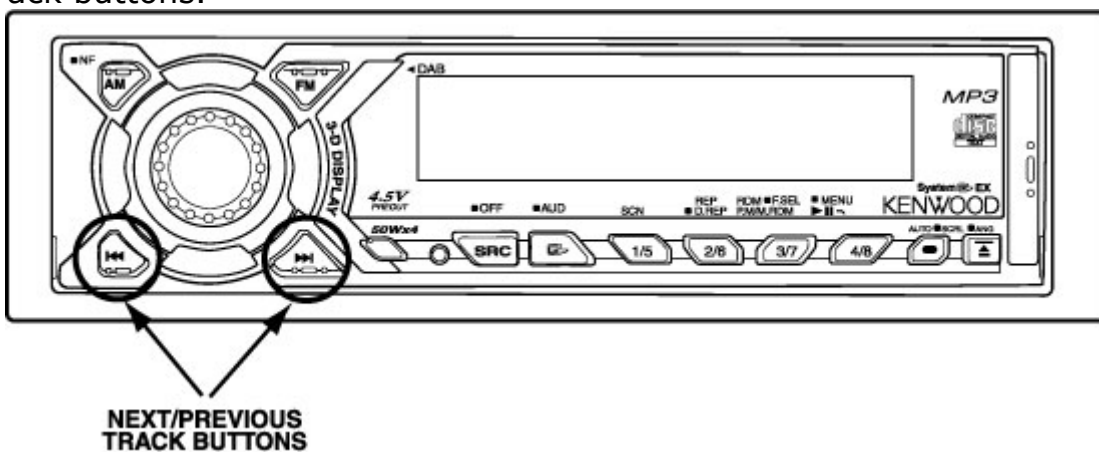
Setting the audio mode

To use the Music Keg, you must first put the Kenwood stereo into CD changer mode. Push the "SRC" button on your Kenwood stereo until the display reads "DISC".



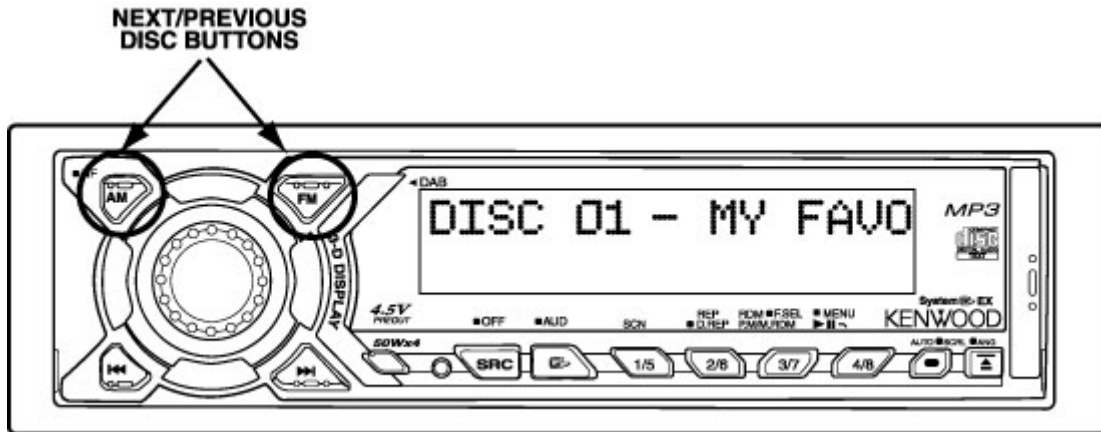
Navigating the songs in a playlist

After the Kenwood stereo is set to CD Changer mode, you can navigate the songs in a Music Keg playlist by using the next/previous track buttons.



Navigating the playlists in the Kenwood Music Keg

Skipping from one playlist to the next is easy. Simply press the next/previous disc buttons.



Displaying information about your music

Since most Kenwood stereos display CD Text the song and artist name from the MP3 ID3 tag will scroll across the stereo's display.

Special Notes

Car Power

The Music Keg takes advantage of the different power states of the car. That is, the Music Keg will turn on when you switch the stereo to the CD Changer mode. Once on, the Music Keg will remain on until the car is turned off.

Seeking within a song

As a CD player would, you can seek through a song by holding the track forward or reverse buttons down for more than 1 second. After seeking 2 minutes through a song, the Music Keg will enter a fast seek mode. This will allow you to quickly seek several minutes into a song.

If you seek past the end of a song, the Music Keg will continue seeking into the next song.

Other Features

Your Kenwood stereo may have SCAN or RANDOM features. These features work as expected with the Music Keg.

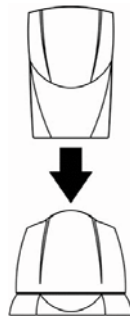
Appendix A: Updating the Firmware in your Kenwood Music Keg

Your Kenwood Music Keg has firmware programmed inside of it. It has been already been setup from the factory to work with your Kenwood stereo.

PhatNoise periodically releases updates to the firmware to improve operation of your Music Keg or to provide feature upgrades to Music Keg owners. A notice of firmware updates may appear on the Kenwood Music Keg website, or you may be contacted via the email address you registered with PhatNoise when you loaded your Music Manager Software onto your PC.

In the event of a firmware update, follow these steps.

1. Insert the DMS cartridge into the USB Cradle.

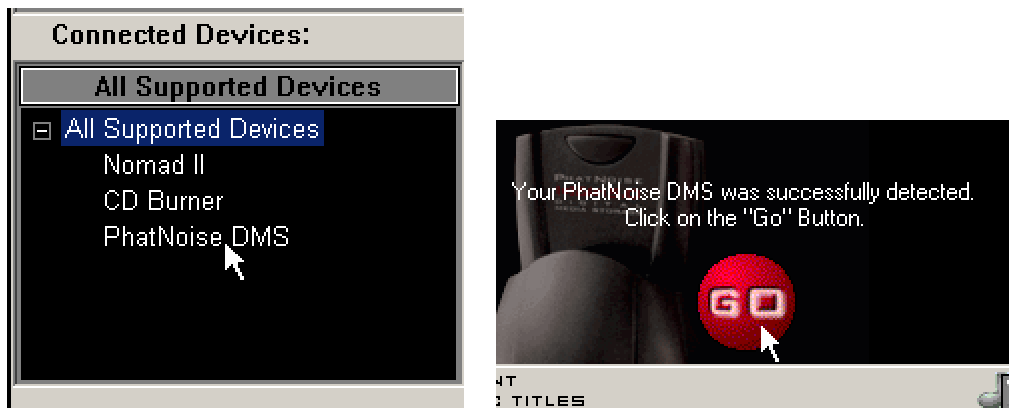


2. Launch the Music Manager by double-clicking the icon on your desktop

3. Press the **Device Manager** button.



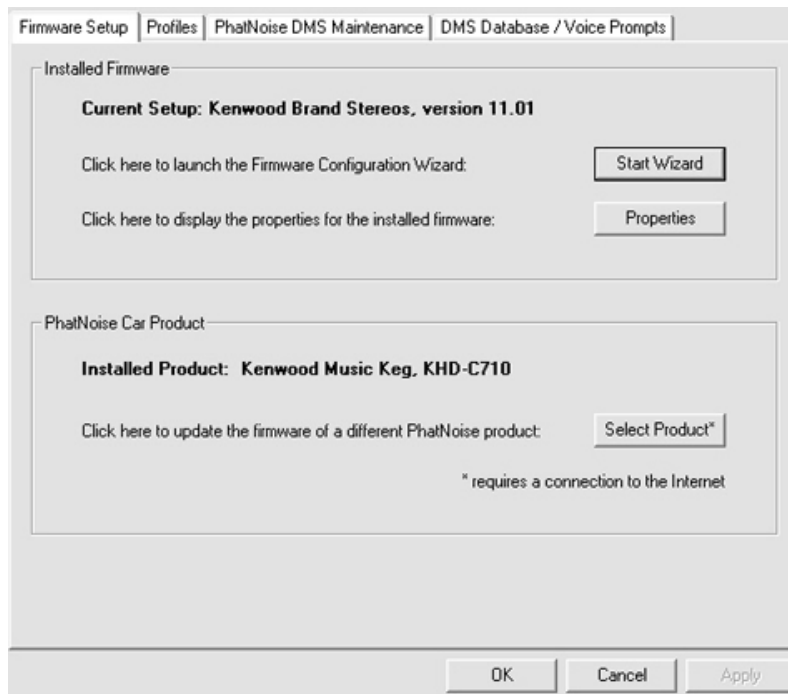
4. Click the text **PhatNoise DMS** and then press the "GO" button.



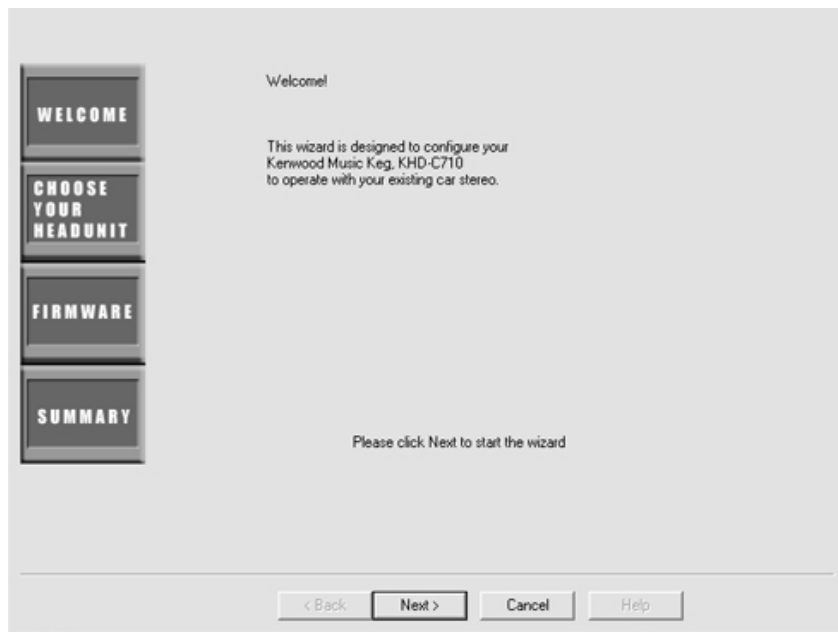
5. Press the **Hardware Options** button.



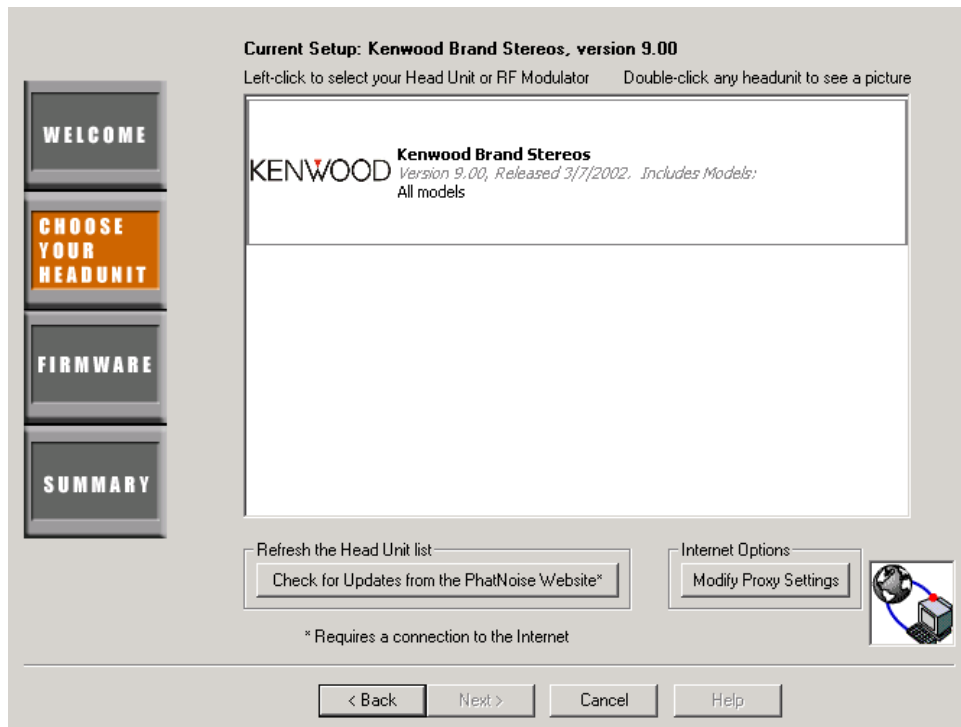
6. Press 'Select Product' to select Installed Product. Make sure the 'Installed Product' is the Kenwood Music Keg. Press the **Start Wizard** button to begin the update process.



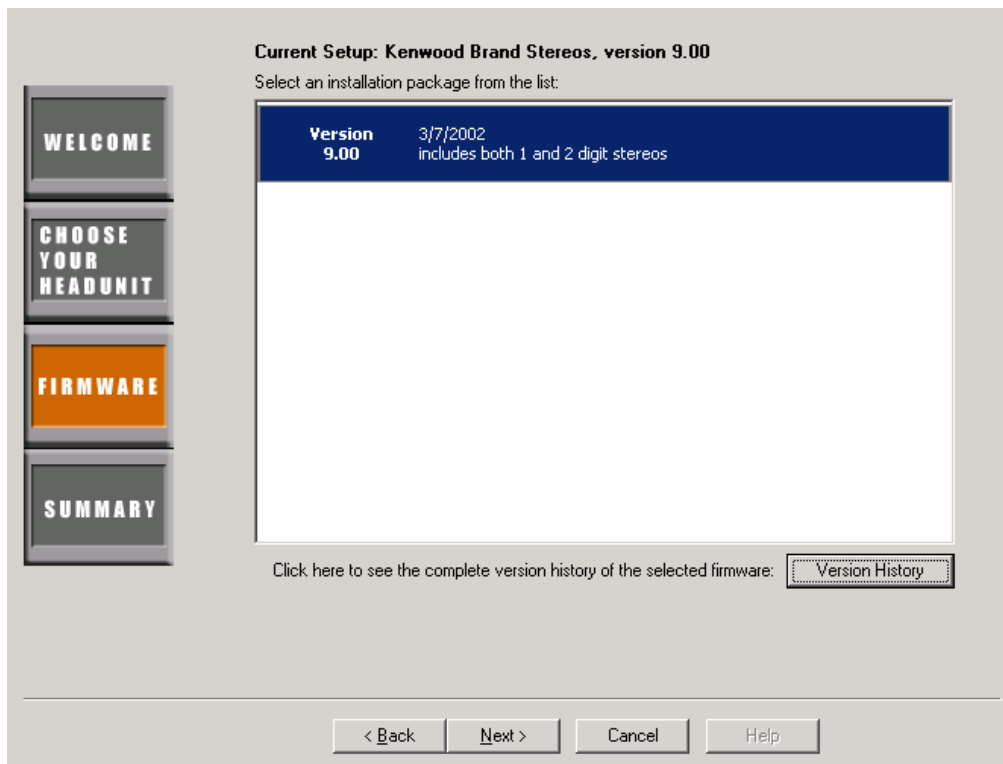
7. The wizard will begin. Press **Next** to skip the introductory screen.



8. Press the **Check for Updates from PhatNoise Website** button to load the latest set of Kenwood stereos. Choose the appropriate firmware (there may be only one).



10. Press the **Next** button. The window will display the firmware version information.



11. Press the **Next** button one more time. This screen summarizes the options you have chosen. Press **Update DMS** when you are done.



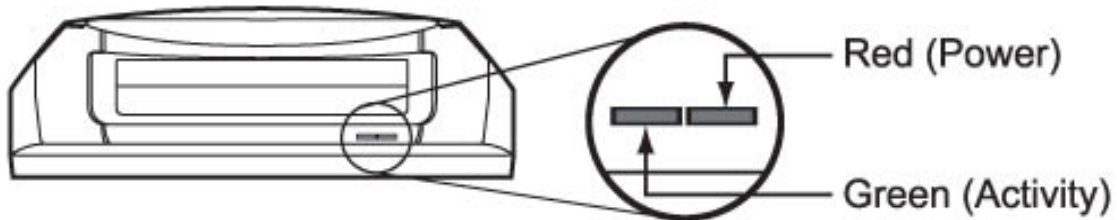
Make sure you are choosing the correct options and are selecting the correct firmware version for your car stereo!

12. The wizard will close. Now press the **Save/Eject DMS** button.



After completing these steps, your DMS cartridge will have all the appropriate software on it. Now the Music Keg can be updated using the following steps:

13. While your car stereo is off, insert the DMS cartridge into your Music Keg.
14. Turn on the stereo and verify that the Kenwood Music Keg powers on (the green light begins to blink rapidly).



15. While the green light is blinking, the Music Keg is reprogramming itself. This will take about 5 minutes.



Do not pull the cartridge out while the green light is blinking. Make sure the stereo is off when you pull out the DMS cartridge.

16. You may turn off the stereo and lock the car – the Music Keg will turn itself off when done.
17. When the Music Keg is done reprogramming, all the Music Keg lights will turn off. Now the Music Keg is ready for normal operation.

Appendix B: Switching between 1 and 2 digit Kenwood stereos

The firmware inside your Music Keg is setup for a Kenwood '2 digit' stereo from the factory. Kenwood '2 digit' stereos can show numbers greater than 10 on the disc display. Some Kenwood stereos are '1 digit', meaning that the display can only show disc numbers as high as 10.

The following is a partial table of Kenwood stereo models:

2002 Kenwood Excelon

<u>Model Number</u>	<u>1 or 2 digit code</u>
KCA-R70FM	2 digit code
DPX-6020	2 digit code
KDC-X459	1 digit code
KDC-X559	2 digit code
KDC-X659	2 digit code
KDC-X859	2 digit code
KDC-X959	2 digit code
KMD-X92	2 digit code
KVT-911DVD	1 digit code
KVT-M700	1 digit code
Z-910DVD	2 digit code

2002 Kenwood

<u>Model Number</u>	<u>1 or 2 digit code</u>
KCA-R70FM	2 digit code
DPX-4020	2 digit code
KDC-2019	1 digit code
KDC-2019V	1 digit code
KDC-29MR	1 digit code
KDC-319	1 digit code
KDC-4019	1 digit code
KDC-419	1 digit code
KDC-5019	2 digit code
KDC-519	2 digit code
KDC-719	2 digit code
KDC-MP819	2 digit code

KDC-MP919	2 digit code
KDC-MPV619	2 digit code
KDC-MPV7019	2 digit code
KMD-44	1 digit code
KRC-235	1 digit code
KRC-335	1 digit code
KRC-38MR	1 digit code
KRC-435	1 digit code
KRC-535	2 digit code

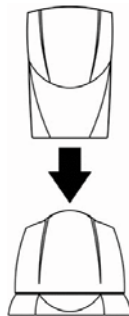
Changing the Kenwood Music Keg between 1 and 2 digit modes

If you have a '1 digit' stereo it may be necessary to switch the Music Keg mode.

Note: the following steps apply to Music Manager versions 1.4 and later, and Kenwood firmware version 9.0 or later.

For older versions you must update the firmware in the Music Keg. Please see the previous section for information on updating the Music Keg.

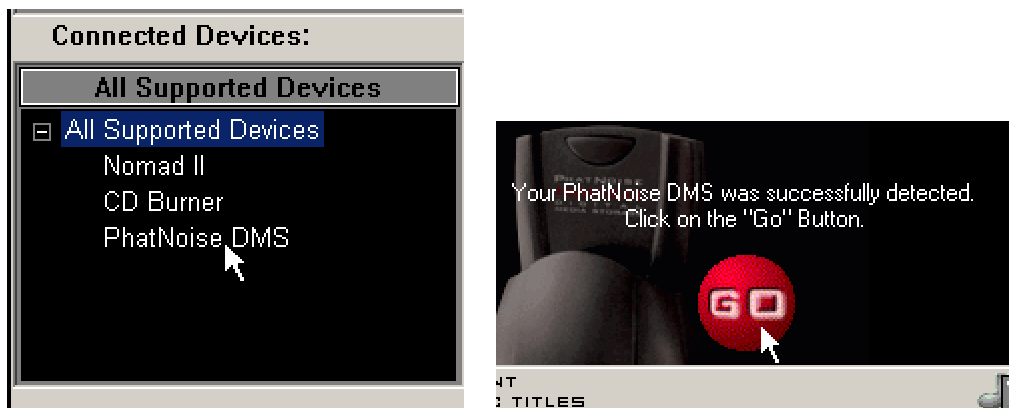
1. Insert the DMS cartridge into the USB Cradle.



2. Launch the Music Manager by double-clicking the icon on your desktop
3. Press the **Device Manager** button.



4. Click the text **PhatNoise DMS** and then press the "GO" button.



5. Press the **Hardware Options** button.



6. Under the **Firmware Setup** tab, press the **Properties** button to show the Firmware Properties window.



7. Choose the appropriate setting and hit ok.
8. Eject the cartridge normally. The next time you use the Music Keg it will automatically use the new settings without any reprogramming.

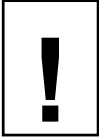
Appendix C: Troubleshooting

Problem	Cause/Solution
No Sound.	<ul style="list-style-type: none"> - Adjust the volume of the stereo. - Make sure the Kenwood Music Keg cable is correctly connected to the Kenwood stereo. - Make sure the Kenwood stereo has the CD changer as the active source. - Make sure the stereo's attenuation or mute button is not engaged.
The stereo cannot access the Music Keg.	<ul style="list-style-type: none"> - Make sure the Music Keg cable is correctly connected to the Kenwood stereo. - Make sure the DMS cartridge has the appropriate firmware for the specific make/model of the Kenwood stereo. - If the above steps don't work, try performing a full reset as specified below (Problem 4).
No Sound. The Kenwood stereo cannot access the Music Keg. Green light on Music Keg blinks and does not stop blinking.	<p>A file is corrupted on the DMS cartridge. This usually happens when the DMS cartridge is removed from the USB cradle while data is being written to the DMS cartridge. To fix the corrupted files:</p> <ul style="list-style-type: none"> -Insert the DMS into USB cradle -Press the Eject DMS button in the PhatNoise Music Manager software. <p>If system files are corrupted, the PhatNoise Music Manager will detect this and run a wizard to repair the files that are damaged.</p>
The Music Keg completely fails to respond.	<p>Perform a full reset on the Music Keg:</p> <ul style="list-style-type: none"> -Turn off the vehicle's ignition. -Unplug the Music Keg cable. -Wait 5 seconds -Plug the Music Keg cable back in. -Turn on the Kenwood stereo & press its reset button.
USB cradle is not recognized properly.	<ul style="list-style-type: none"> - Make sure the computer is running Windows 98, Windows ME, Windows 2000, or Windows XP. (WinNT 4.0 and Windows 95 do not have proper USB support). - The USB interface has been disabled in the system settings or in the motherboard BIOS.

Problem	Cause/Solution
<p>PhatNoise Music Manager software errors containing a "Codebase" message.</p> <p>Or</p> <p>The Music Manager playlists are missing or not working properly.</p>	<p>The Music Manager database files have been corrupted.</p> <p>To fix the database:</p> <ul style="list-style-type: none"> - Close the Music Manager software. - Run the Database Doctor in the Music Manager folder on the Start Menu. <p>If this does not fix the problem, delete the folder "Data" in the Music Manager installation directory (usually C:\Program Files\Music Manager). Please note that this will erase all of your database and playlist files. All the songs will need to be reloaded and the playlists will need to be redefined.</p>
<p>When transferring files to the DMS a message appears "Long Filenames not supported"</p>	<p>The DMS has been mounted incorrectly, or improperly formatted. Cancel the current copy operation, eject the cartridge, and try the operation again.</p>

Appendix D: Warranty and Liability Policy

Important Safety and Handling Instructions



FCC WARNING

This equipment may generate or use radio frequency energy. Changes or modifications to this equipment may cause harmful interference unless the modifications are expressly approved in the instruction manual. There are no authorized user modifications to this product. Damage, deterioration or malfunction resulting from: accident, acts of nature, misuse, abuse, neglect, unauthorized product modification, or failure to follow instructions supplied with the product may void warranty.

NOTE

This equipment has been tested and found to comply with the limits for a Class B digital device, pursuant to Part 15 of the FCC Rules. These limits are designed to provide reasonable protection against harmful interference in a residential installation. This equipment may cause harmful interference to radio communications, if it is not installed and used in accordance with the instructions. However, there is no guarantee that interference will not occur in a particular installation. If this equipment does cause harmful interference to radio or television reception, which can be determined by turning the equipment off and on, the user is encouraged to try to correct the interference by one or more of the following measures:

- Reorient or relocate the receiving antenna
- Increase the separation between the equipment and the receiver
- Connect the equipment into an outlet on a circuit different from that to which the receiver is connected
- Consult the dealer or an experienced radio/TV technician for help.

PLEASE READ AND UNDERSTAND ALL INSTRUCTIONS

Installation Precautions

Mounting location precautions to ensure and observe:

1. The unit is not subject to direct sunlight.
2. The unit is not near heat sources (such as heaters).
3. The unit is not exposed to rain or moisture.
4. The unit is not exposed to excessive dust, sand or dirt.
5. The unit is not subject to excessive vibration.
6. The fuel tank should not be damaged by the tapping screws.
7. There should be no wire harnesses or pipes under the place where you are going to install the unit.

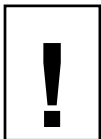
8. The spare tire, tools or other equipment in or under the trunk should not be interfered with or damaged by the screws or the unit itself.
9. Make holes only after making sure there is nothing on the other side of the mounting surface.

Digital Media Storage Cartridge Precautions

1. Do not leave the DMS cartridge in locations with high temperatures and high humidity, such as on a car dashboard or in the rear window where it will be subject to direct sunlight. Do not subject the DMS cartridge to extreme cold temperatures.
2. Do not place more than one DMS cartridge at a time into the Music Keg.
3. Do not drop the DMS cartridge or subject it to a violent shock.
4. Do not spill liquid on the DMS cartridge or submerge the DMS cartridge in liquid.
5. Do not remove the DMS cartridge from the Music Keg unless the Music Keg is turned off.
6. Do not remove the DMS cartridge from the USB cradle until downloading is complete.
7. The only effective protection for data and other material stored on the DMS cartridge is the regular backing-up of that data by you, the consumer. Kenwood USA Corporation shall not be responsible for the loss of any such data or other material.

Kenwood Music Keg Player and USB Cradle Precautions

1. Never spill liquid of any kind on the Music Keg.
2. Do not place the Music Keg on an unstable cart, stand or table. The product may fall, causing serious damage to the product.
3. Do not use any object to probe the opening of the product and do not put any body parts or other foreign objects in the opening of the product- this may result in bodily injury and can also damage the product.
4. Avoid severe impact. Do not drop the Music Keg on a solid surface or drop a heavy object on the Music Keg.
5. Take care when plugging and unplugging cables.
6. Do not hold the Music Keg or the USB cradle by the cables alone.
7. Do not remove the DMS cartridge from the USB cradle until downloading is complete.



Do not attempt to service any part of the product yourself. Servicing should only be done by qualified service personnel.

Appendix E: Using Audible content with your Kenwood Music Keg

Introduction

Audible is a huge collection of audio programming delivered digitally over the Internet, anywhere, anytime. At audible.com, you can choose from over 4,500 audiobooks and 14,000 other audio programs. You can download those programs to your computer and listen immediately, or you can transfer them to your Kenwood Music Keg and listen on the go.

Getting Started with Audible

This guide is a brief introduction to using the Music Manager with Audible content. For a thorough explanation of the Audible service visit Audible's website at <http://www.audible.com/kenwood> or view the Music Manager Help File by pressing F1 while the program is running.

Creating a new Audible.com account

To get started, please perform the following steps:

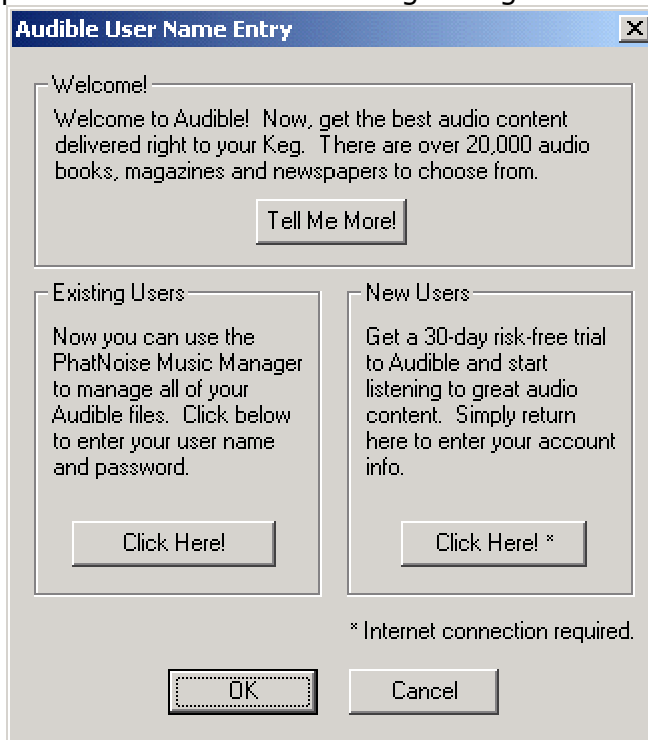
1. Go to the Library View by clicking the **Library Button**.



2. Click "**All Audible Content**".



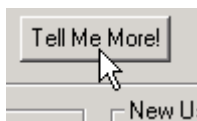
3. When you click the "**All Audible Content**" link for the first time you will be presented with the following dialog box:



The Audible User Name Entry dialog box gives you the following three options:

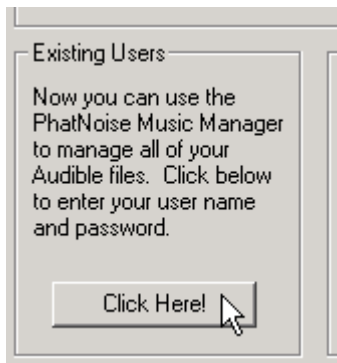
Welcome - Tell Me More!

Click the **Tell Me More!** Button to get more information about audible.com



Existing Users - Click Here!

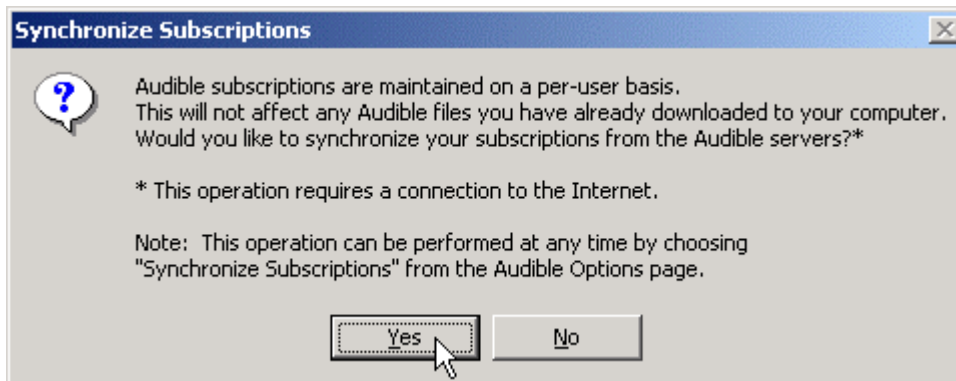
Click the Existing Users **Click Here!** Button if you already have an audible.com account



Enter your audible.com username and password. Then press the **OK** button.

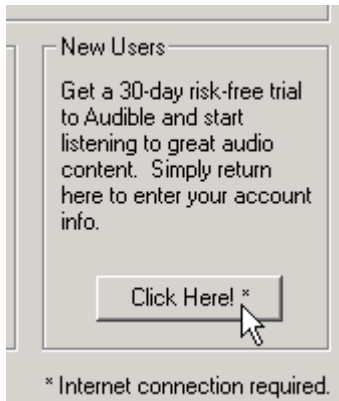


A dialog box will appear asking if you would like to synchronize your subscriptions with the Audible.com servers. We recommend you press the **Yes** button.



New Users - Click Here!

Click the New Users **Click Here!** Button to create a new audible.com account and take advantage of our special introductory offer.



You will be taken to the new user signup page at <http://audible.com/kenwood>
Please follow the instructions on the site.

Once you have registered at the audible.com site, return back to the Music Manager. Now that you are a registered audible.com user, click the **Existing Users - Click Here!** button and follow the steps explained above.

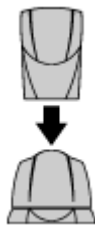
Once your audible.com username and password have been entered, you will be ready to download Audible content for use with the Music Manager and your Kenwood Music Keg.

Audible Content on the DMS Cartridge

Audible files are transferred to the DMS in much the same way as mp3 files are transferred to the DMS. The only difference is that most Audible files are indexed according to chapter or section breaks in the content. A new track will be added for each index point. This will make it easy for you to listen to what you want to listen to in the car.

To transfer Audible files to the DMS, follow these steps:

1. Insert the DMS cartridge into the USB cradle.

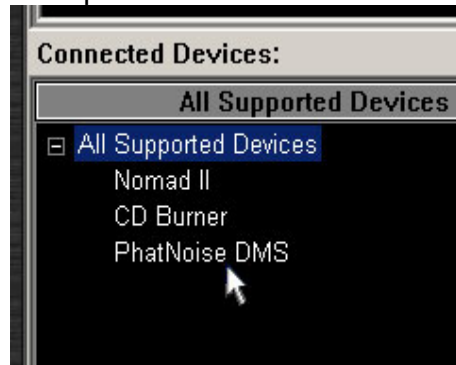


2. Click on the **Device View** button



3. Click on the "**PhatNoise DMS**" text under the All Supported

Devices panel



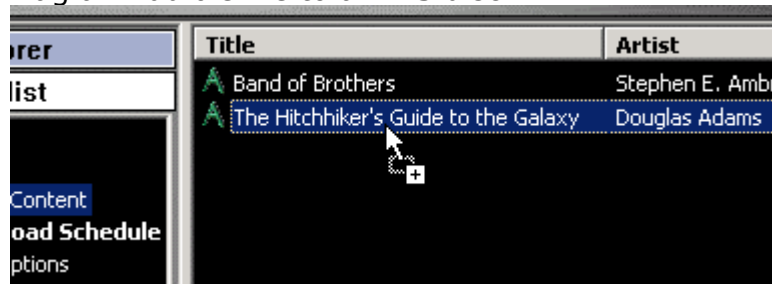
4. Click on the red GO button

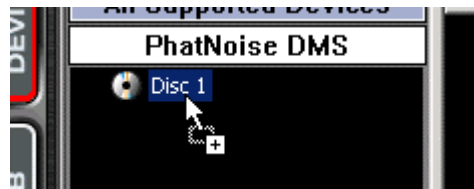


5. On the top portion of the Device view click on the **"All Audible Content"** text in the Playlist panel

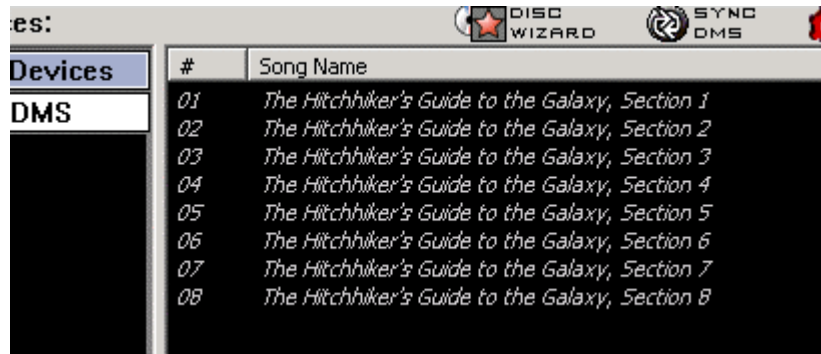


6. Drag an Audible file to a DMS disc





You will notice that the Audible file will be added, and each section break will correspond to a track on the DMS.



Assigning a track to each index point is meant to assist you in finding your place in longer audiobooks and/or periodicals.

Dynamic Audible Subscription Discs

It is possible to create discs that will automatically update with issues of Audible subscriptions. To create a dynamic audible subscription disc, follow these steps:

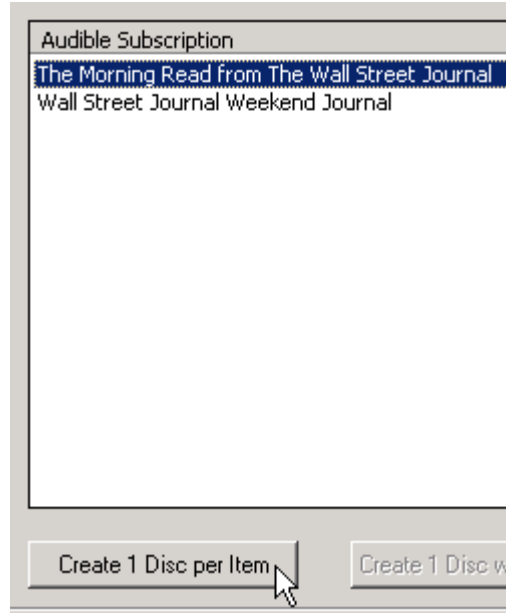
1. Click the **Disc Wizard** button from the DMS view



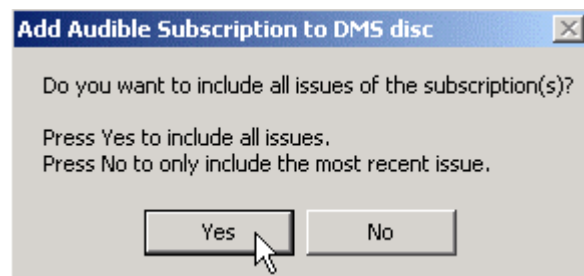
2. Choose "**Audible Subscriptions**" from the "Create From" drop down list



3. Select one or more Audible subscriptions and click one of the "Create" buttons



4. You will then be asked if you'd like to include all of the issues of the subscription, or only the most recent issue. Click yes or no as desired.



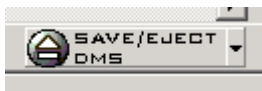
To update the Audible Subscription Discs

Discs will automatically be updated when you click the **Sync DMS** button.



Saving Your Changes

When you have finished organizing your Audible content, click the **SAVE/EJECT DMS** button.



Playing Audible content in your car

A playlist with Audible content on it will auto-resume. The Auto-resume feature allows the Kenwood Music Keg to remember where playback stopped in a playlist.

For example, suppose you are listening to an Audible playlist and you press the Disc Up button to listen to a different playlist. To return back to the Audible playlist, press Disc Down, and the Music Keg will remember where you left off and jump to the correct point in the playlist.

Appendix E: Contacting Kenwood Support

Need help? What goes where, compatibility, and troubleshooting?
Please feel free to contact us at:

Web: <http://www.kenwoodusa.com>

Email: inquiry@kenwoodusa.com

Phone: 1-800-KENWOOD (536-9663)

Mailing Address: P.O. Box 22745
Long Beach, CA 90801-5745

Call center is available 8:30am – 5:00pm Pacific Time Monday through Friday.

KHD-UM1